

## **Telescoping Valves Rack and Pinion Type Suggested Specifications**

The telescoping valves were shown in the plans and specifications shall be as manufactured by **Northcoast Valve & Gate, Inc.**

### **Materials of Construction**

Slip tubes - 304 or 316 Stainless Steel, Brass or PVC

Stems - Steel rack with 304 or 316 Stainless Steel Extensions

Seals - Neoprene, Die Cut

Bails - Stainless Steel, Type 304 or 316

Scum Baffles - Stainless Steel, Type 304 or 316

Fasteners - Stainless Steel, Type 304 or 316

### **Slip Tubes**

The valve slip tube shall be of seamless brass, stainless steel or PVC with a minimum wall thickness of 1/8" to prevent corrosion and to ensure proper operation at all times and arranged to slide inside of the sludge draw-off pipe as shown on the drawings. The valve shall have two V-notched weirs located 180 degrees apart.

### **Floorstands**

The valve floorstand shall be constructed of steel and designed to support the valve lifting stem, slip tube and be provided with a rack and pinion operator with palm pressure releasing locking device.

### **Packing Flanges**

The valves shall be provided with a cast iron packing flange and double stacked gasket seals designed to provide a tight fit around perimeter of valve slip tube.

## **Telescoping Valve Specifications**

### **Scum Baffles**

The valve scum baffles shall be fabricated from aluminum and shall be 12" high and 24" in diameter.

### **Bails**

Bails shall be fabricated from stainless steel, fully welded, bolted to valve slip tube and provided with hex nuts and lock washers for final adjustment of valve travel.

### **Stem Covers**

The stem covers shall be of clear butyrate tubing and shall be provided with vent holes and rain cap to prevent dust and dirt from settling on the rack. Travel shall be indicated by a clear mylar tape showing 1" increments of travel.

**Telescoping Valves  
Handwheel Operated Type  
Suggested Specifications**

The telescoping valves were shown in the plans and specifications shall be as manufactured by **Northcoast Valve & Gate, Inc.**

**Materials of Construction**

Slip tubes - 304 or 316 Stainless Steel, Brass or PVC

Stems - Stainless Steel, Acme Threaded Rod, Type 304 or 316

Seals - Neoprene, Die Cut

Bails - Stainless Steel, Type 304 or 316

Scum Baffles - Aluminum, Type 6061-T6

Fasteners - Stainless Steel, Type 304 or 316

**Slip Tubes**

The valve slip tube shall be of seamless brass, stainless steel or PVC with a minimum wall thickness of 1/8" to prevent corrosion and to ensure proper operation at all times and arranged to slide inside of the sludge draw-off pipe as shown on the drawings. The valve shall have two V-notched weirs located 180 degrees apart.

**Floorstands**

The valve floorstand shall be constructed of steel and designed to support the valve lifting stem, slip tube and be provided with a handwheel, gear or motor operator as shown on the drawings.

**Packing Flanges**

The valves shall be provided with a cast iron packing flange and double stacked gasket seals designed to provide a tight fit around perimeter of valve slip tube.

## **Telescoping Valve Specifications**

### **Scum Baffles**

The valve scum baffles shall be fabricated from aluminum and shall be 12" high and 24" in diameter.

### **Bails**

Bails shall be fabricated from stainless steel, fully welded, bolted to valve slip tube and provided with hex nuts and lock washers for final adjustment of valve travel.

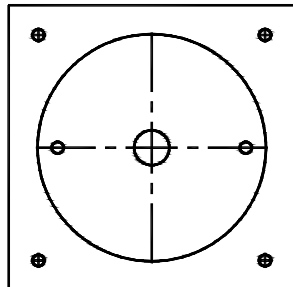
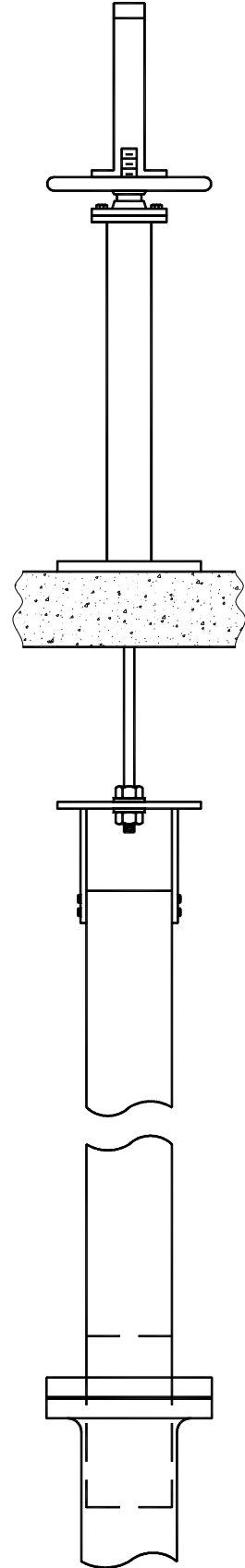
### **Stem Covers**

The stem covers shall be of clear butyrate tubing and shall be provided with vent holes and rain cap to prevent dust and dirt from settling on the rack. Travel shall be indicated by a clear mylar tape showing 1" increments of travel.



## TELESCOPING VALVES SERIES 700

- \* HANDWHEEL OPERATOR
- \* RISING STEM
- \* STAINLESS STEEL STEM
- \* SLIP TUBES IN BRASS, STAINLESS STEEL OR PVC

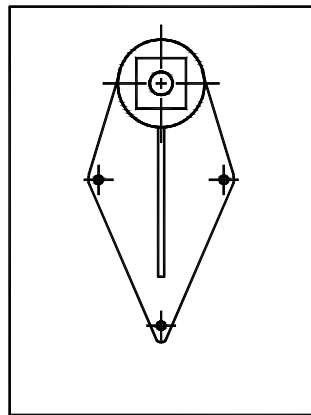
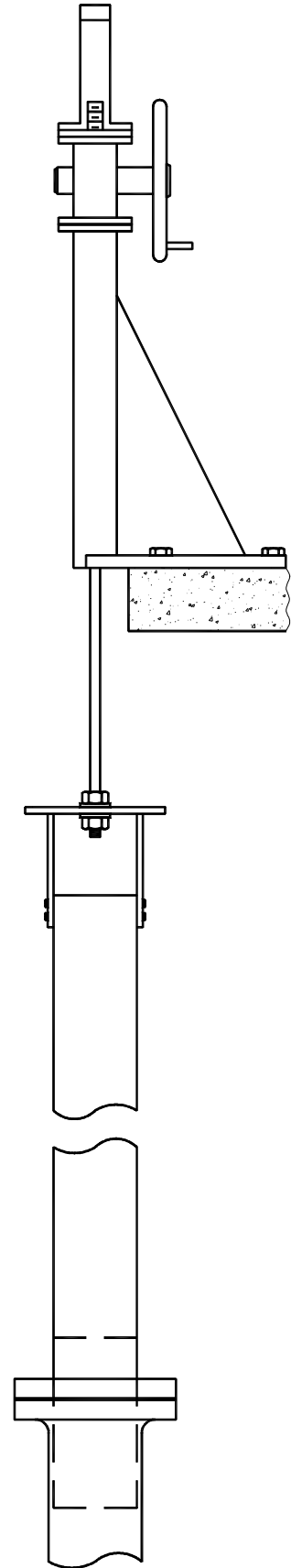


FLOORSTAND BASE DETAIL



## TELESCOPING VALVES SERIES 800

- \* RACK AND PINION OPERATOR
- \* RISING STEM
- \* SLIP TUBES IN BRASS, STAINLESS STEEL OR PVC

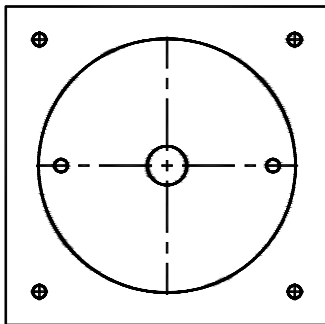
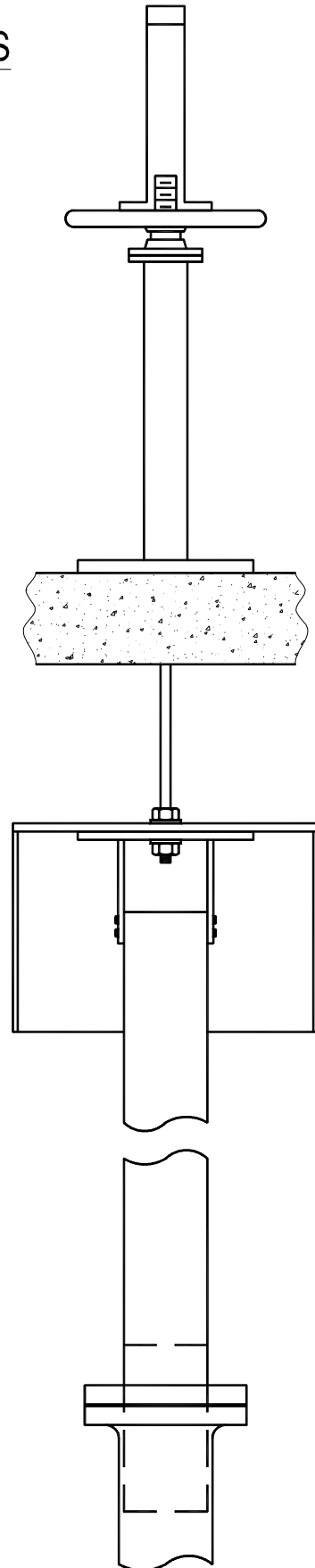


FLOORSTAND BASE DETAIL

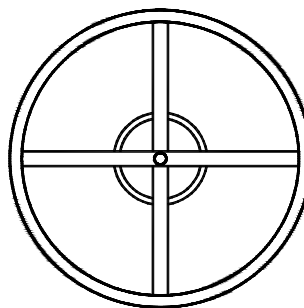


## TELESCOPING VALVES SERIES 900

- \* HANDWHEEL OPERATOR
- \* RISING STEM
- \* SLIP TUBES IN BRASS, STAINLESS STEEL OR PVC
- \* SCUM BAFFLES IN ALUMINUM AND STAINLESS STEEL



FLOORSTAND BASE DETAIL



SCUM BAFFLE DETAILS