

Aluminum Stop Gates Suggested Specifications

The aluminum stop gates were shown in the plans and specifications shall be as manufactured by **Northcoast Valve & Gate, Inc.**

Materials of Construction

Frame - Aluminum, ASTM B209 alloy 6061

Plates - Aluminum, ASTM B209 alloy 6061

Fasteners - Stainless Steel, ASTM F593 Type 304

Guide Bars - Ultra High Molecular Weight Polyethylene (UHMW)

Guides

Stop gate guides shall be of aluminum type 6061 alloy and be either wall mounted, face mounted or embedded type.

Plates

Stop gate plates shall be of aluminum type 6061 alloy, 1/4" thick and reinforced as required to limit deflection to 1/360 of the span under full design head.

Guide Bars

All stop gate frame extrusions shall be provided with UHMW polyethylene guide bars with a coefficient of friction of less than .2 to reduce the operating efforts.

Handles

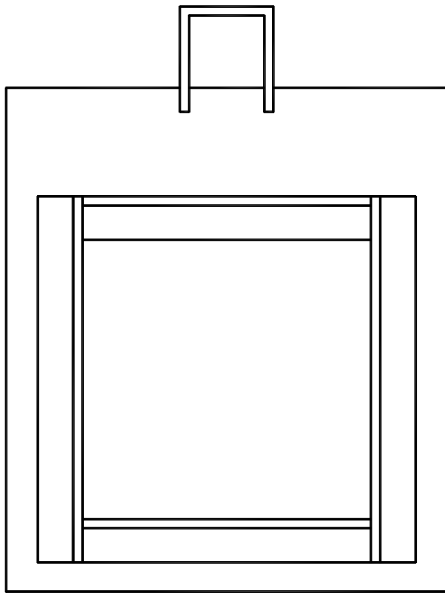
Stop gates shall be provided with aluminum bar handle lifts or hand slots as required. Gates will be provided with a single handle lift or slot for gates up to 3 ft. in width and dual handles or slots for gates over 3 ft. in width.

Painting

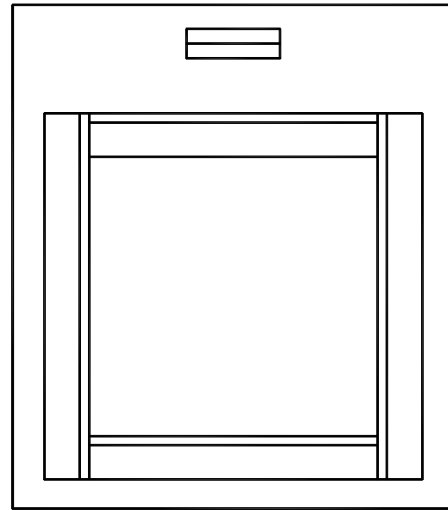
All aluminum in contact with concrete shall be given two coats of coal tar epoxy.



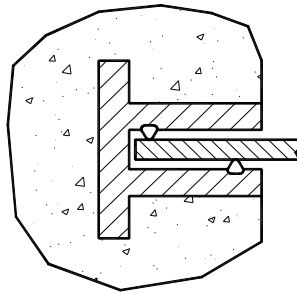
ALUMINUM STOP GATES



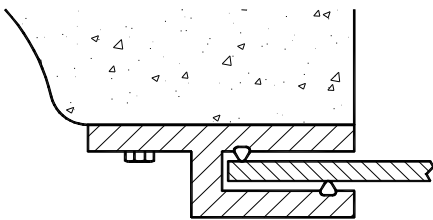
SERIES 100



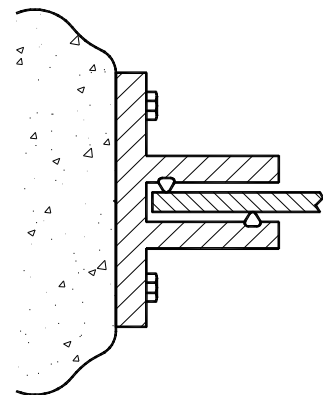
SERIES 200



EMBEDDED FRAME DETAIL
TYPE 1



WALL MOUNTED FRAME
TYPE 2



CHANNEL FRAME
TYPE 3