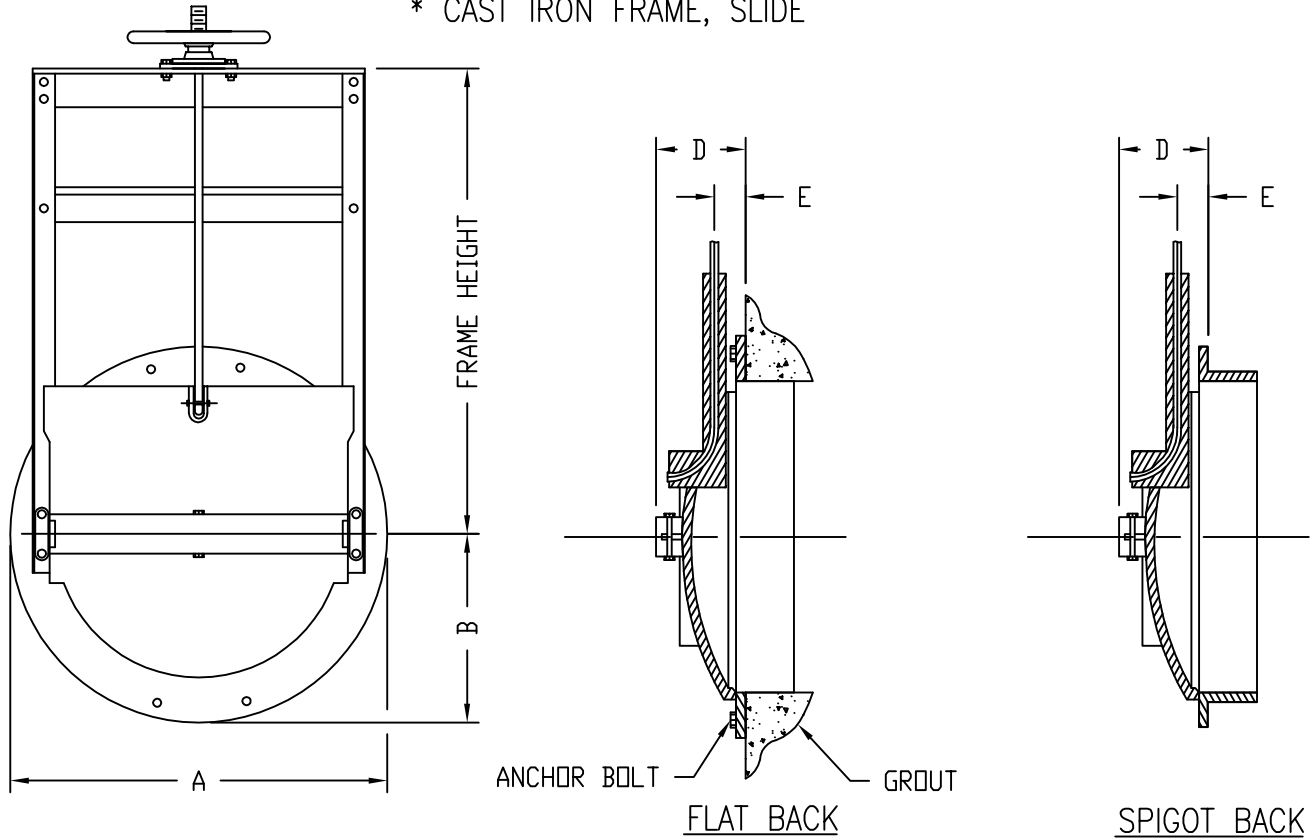




# NC20-10 SLUICE GATE

20-FOOT SEATING HEAD  
10-FOOT UNSEATING HEAD

- \* ROUND OPENING
- \* RISING STEM
- \* CAST IRON OR BRONZE SEATING SURFACES
- \* CAST IRON FRAME, SLIDE
- \* FLAT OR SPIGOT BACK
- \* UNIQUE WEDGING ACTION
- \* GALVANIZED STEEL GUIDES AND SEAT ANGLES



GATE DIA.	A	B	D	E	STEM DIA.	MINIMUM FRAME HEIGHT (FT.)
8	13.50	6.75	5.500	3.375	7/8"	2
10	16.00	8.00	5.750	3.375	7/8"	2
12	19.00	9.50	5.750	3.375	7/8"	2
15	22.00	11.00	7.625	3.500	7/8"	3
18	25.00	12.50	8.250	4.375	1 1/8"	3
21	28.50	14.25	8.250	4.375	1 1/8"	4
24	32.00	16.00	11.125	4.500	1 1/8"	4
30	38.75	19.38	12.500	6.000	1 1/2"	5
36	46.00	23.00	14.125	6.250	1 1/2"	6