

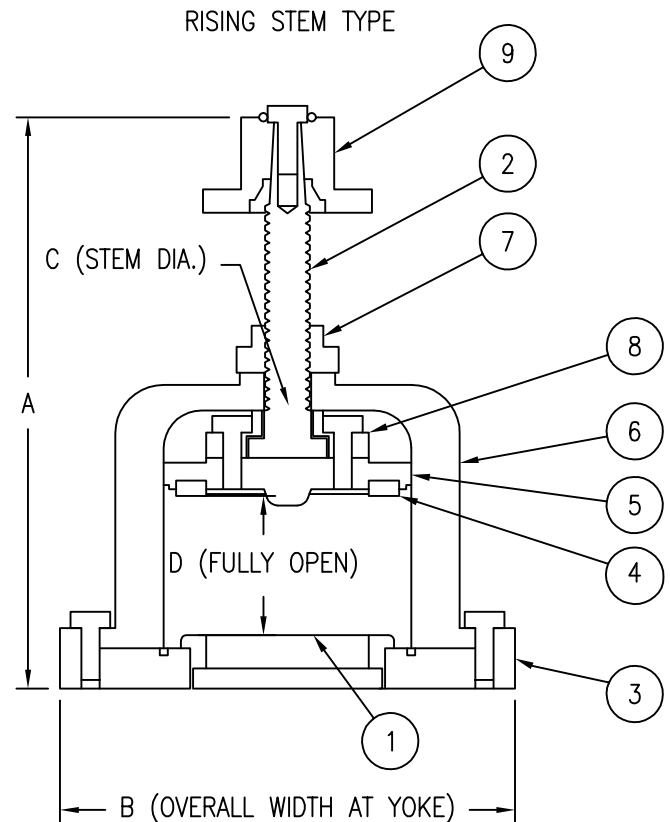
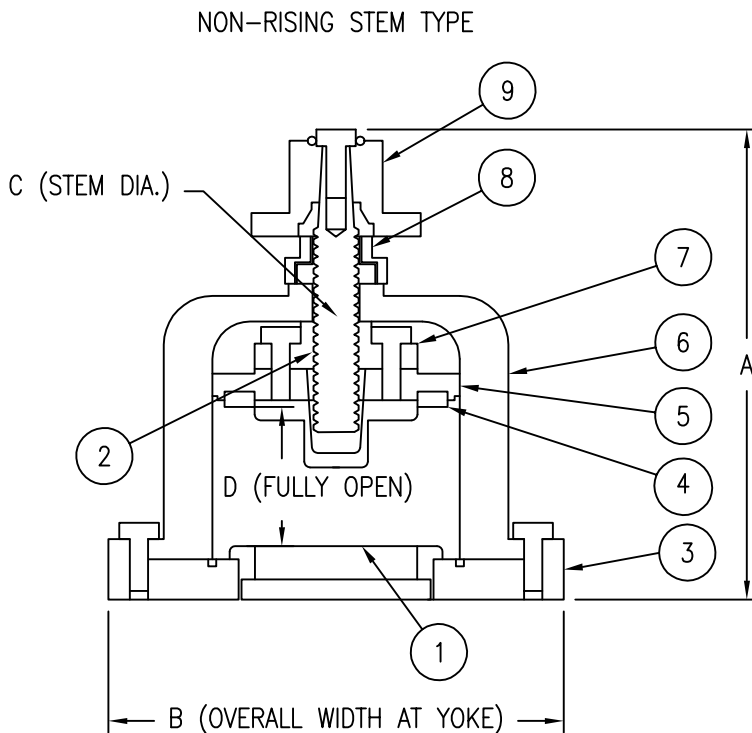


# MUD VALVES

## NON-RISING AND RISING STEM

	VALVE SIZE				
	4	6	8	10	12
A (OPEN HEIGHT), NRS	9 ½	10 ½	11 ¾	14 ½	15 ¾
A (OPEN HEIGHT), RS	13 ¾	15 ½	16 ½	-	-
B (OVERALL WIDTH AT YOKE)	10	12 ¼	14 ½	17	19 ¾
C (STEM DIAMETER)	1	1 ⅛	1 ¼	1 ⅜	1 ½
D (GATE RISE)	2 ⅞	3 ½	4 ⅛	4 ¼	4 ¾
FLANGE O.D.	9	11	13 ½	16	19
BOLT CIRCLE	7.5	9.5	11.75	14.25	17.0
BOLT HOLE DIA.	¾	⅞	⅞	⅞	⅞
URNS TO OPEN	5 ½	8	9	12 ½	16

STANDARD 125# TEMPLATE FOR DRILLING



**NOTES:**

**MATERIALS**

STEM - ASTM B584 / UNS C86400 MANGANESE BRONZE

THREADED GUIDE - ASTM B584 / UNS C86400 MANGANESE BRONZE

GATE SEAL - ASTM B584 / UNS C83600 RED BRASS

BODY SEAL - ASTM B584 / UNS C83600 RED BRASS

CASTINGS - GRAY CAST IRON, CLASS 30

FASTENERS - STAINLESS STEEL, TYPE 316

FINISHED WITH BLACK RUST PREVENTIVE COATING